



Clyfton Close, Broxbourne EN10 6NT

£1,350 Per month



2



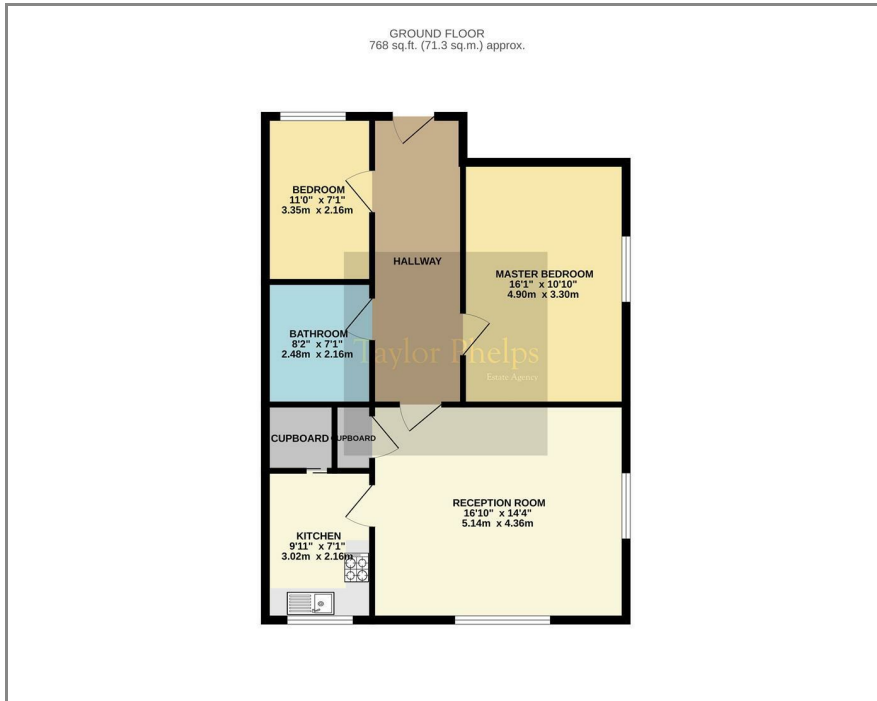
1

Taylor Phelps

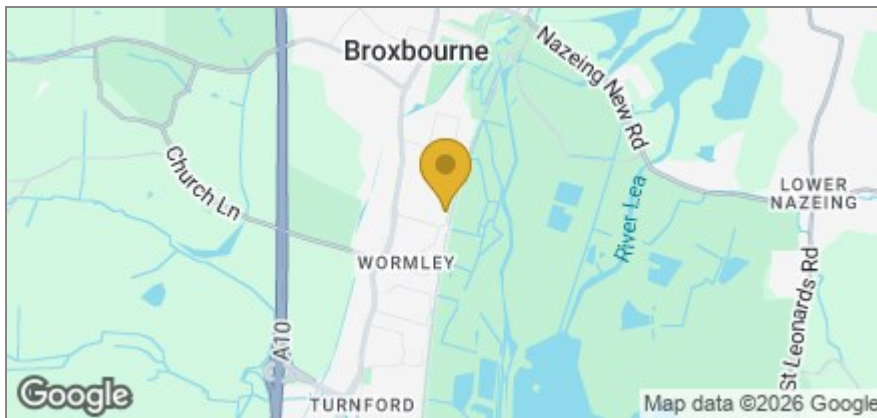
Estate Agency

Taylor Phelps

Floor Plan



Area Map



Taylor Phelps are pleased to offer spacious two bedroom apartment in Broxbourne. This property has been subject of a recent refurbishment and boasts a brand new refitted kitchen, new bathrooms and new carpet throughout. Positioned close to Broxbourne mainline train station.



Energy Efficiency Graph



These particulars, whilst believed to be accurate are set out as a general outline only for guidance and do not constitute any part of an offer or contract. Intending purchasers should not rely on them as statements of representation of fact, but must satisfy themselves by inspection or otherwise as to their accuracy. No person in this firm's employment has the authority to make or give any representation or warranty in respect of the property.

01920 459000

hello@taylorphelps.co.uk

5 Frenchs Yard, Amwell End, Ware, Hertfordshire, SG12 9HP

www.taylorphelps.co.uk

